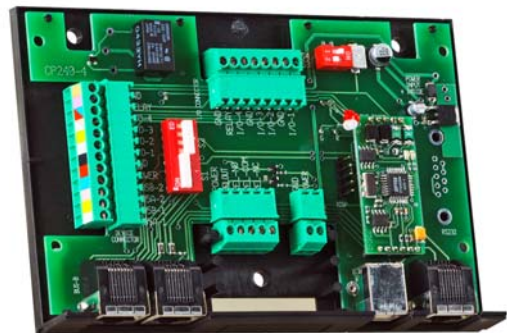


## XMCU4(A) Connection Units



### Quick Features List

- Installer device for quick and reliable XM3 connection
- External relay, offering:
  - Increased security level
  - High power/current switching
- USB to RS485 converter
- RJ45 connections, enabling easy RS485 network connections
- Slim line design
- Easy wall mounting through use of a bracket

### XMCU4(A) Connection Unit

The XMCU4 connection Unit makes installing an XM3 MICROPROXS™ stand-alone reader very easy.

Removable connectors as well as RJ45 plug-in RS485 network connectors enable quick and reliable connections.

An external relay is available on the XMCU4 unit for switching a door strike, to improve the security using a relay on the so-called 'safe side' of the building. This external relay can be activated by a coded signal from the XM3.

An on-board power distributor makes it possible to (backup the) power from a central point. Each XM3 has to be powered by an individual power line/supply.

All XMCU4A connection units have a USB to RS485 converter making it a very cost-effective solution.

**CROSS POINT**  
The ID Security Company

phone +31 (0)591 - 66 88 66  
fax +31 (0)591 - 66 88 67

address Waanderweg 12 • 7812 HZ • Emmen  
P.O. Box 2112 • 7801 CC • Emmen  
The Netherlands

mail [info@crosspoint.nl](mailto:info@crosspoint.nl)  
url [www.crosspoint.nl](http://www.crosspoint.nl)

### Article Number

1104-0011-0000-000

### Description

XMCU4A Connection Unit  
with USB to RS485 converter

1104-0010-0000-000

XMCU4 Connection Unit